



**BENJAMIN
STEVENS.**
estate agents



27 Mead Road, Edgware, HA8 6LH
Offers In Excess Of £375,000

A well presented two double bedroom, two bathroom Edwardian house. Conveniently located close to transport and shopping facilities of both central Edgware and Canons Park.

Accommodation comprises through lounge, separate kitchen, family bathroom, two double bedrooms and an additional ground floor shower room.

Features include access to loft, and private garden.

****Chain Free****

Call vendor's agent's Benjamin Stevens now to arrange a viewing!

Reception Room 26'7 x 11'3 (8.10m x 3.43m)



First Bedroom 11'3 x 11'1 (3.43m x 3.38m)



Reception Room 26'7 x 11'3 (8.10m x 3.43m)



Second Bedroom 10'10 x 8'5 (3.30m x 2.57m)



Kitchen 9'6 x 6'3 (2.90m x 1.91m)



Bathroom 8'10 x 6'1 (2.69m x 1.85m)



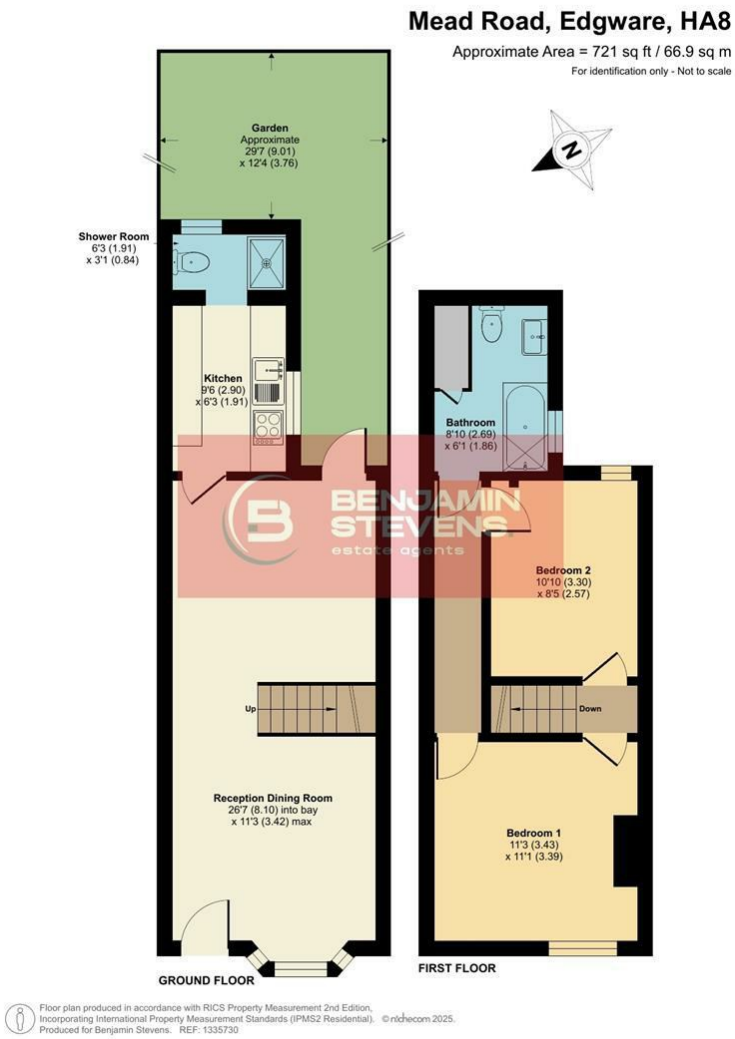
Garden



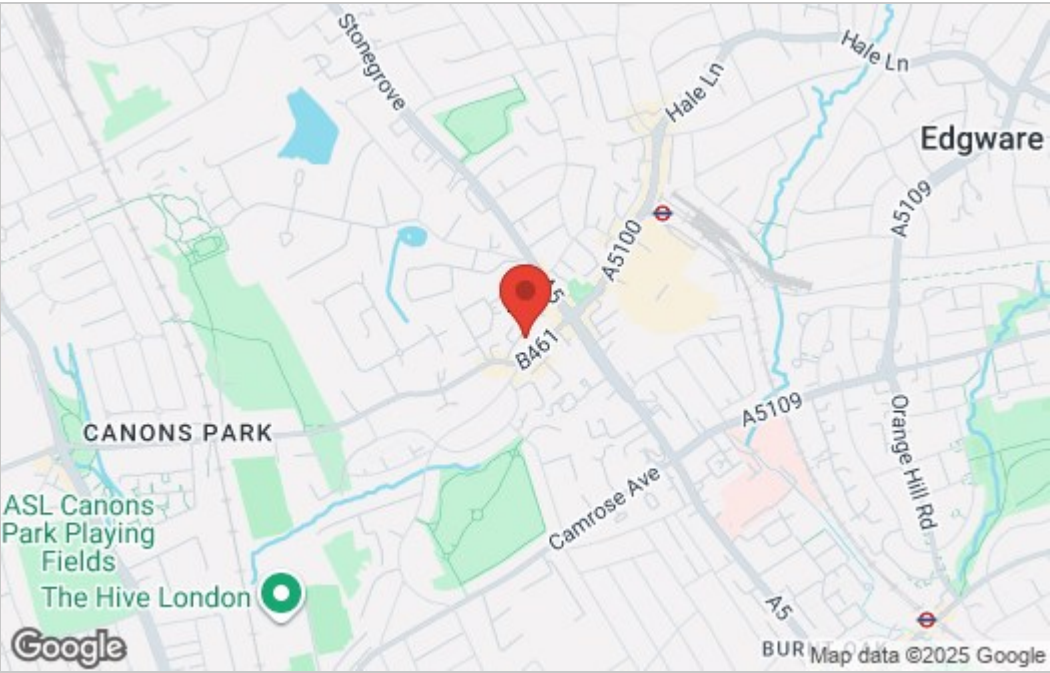
Rear Aspect



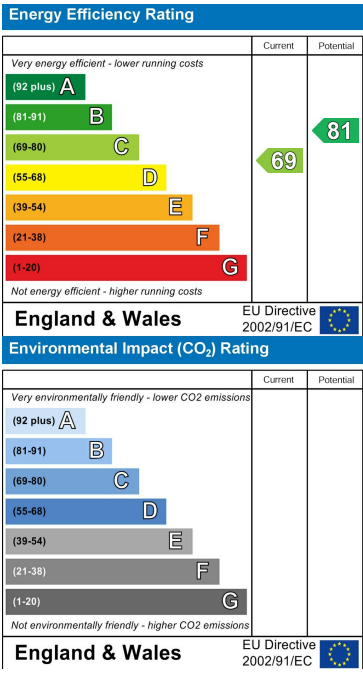
Floor Plan



Area Map



Energy Efficiency Graph



These particulars, whilst believed to be accurate are set out as a general outline only for guidance and do not constitute any part of an offer or contract. Intending purchasers should not rely on them as statements of representation of fact, but must satisfy themselves by inspection or otherwise as to their accuracy. No person in this firms employment has the authority to make or give any representation or warranty in respect of the property.



Edgware Office- 194 Station Road, Edgware, HA8 7AT. Tel: 020 8958 1118
Bushey Heath Office- 59 High Road, Bushey, WD23 1EE. Tel: 020 8950 7777
www.benjaminstevens.co.uk